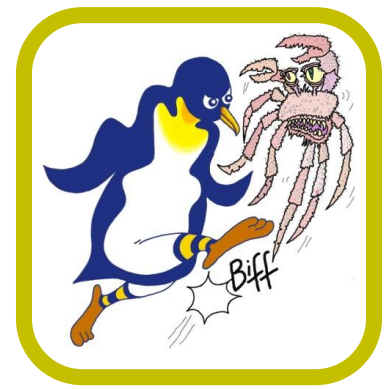


# PENGUINS AGAINST CANCER

---

[www.penguinsagainstcancer.org.uk](http://www.penguinsagainstcancer.org.uk)



*Kicking Cancer Into Touch!*

10<sup>th</sup> July 2015

Princess Alice Hospice  
West End Lane  
Esher  
Surrey  
KT10 8TA

Dear Princess Alice Hospice,

I enclose a grant £1,000 from Penguins Against Cancer to you, to be used to provide palliative care in your excellent institution. This is in addition to the £1,000 grants from Penguins Against Cancer in January and July 2014. Penguins Against Cancer remains a registered charity which raises awareness of cancer, and makes grants to support cancer research, treatment and hospices.

We continue to stage numerous sporting and social events with the aim of making altruism fun. The enclosed grant, proposed by Allan Jones, was made possible by the extraordinary generosity of, amongst others, Paul Chew, Richard Docker, Terry and Jane Gibson and Chris and Anne Howell. In addition, Wayne Llewellyn and Alan Mistlin recently staged the annual Elves against Pixies charity cricket match, a 20-20 affair won in nail-biting fashion by the Oxfordshire Pixie XI, despite a valiant rearguard action from Wocca Worth. This was immediately followed by a touch rugby match (drawn) with the day being rounded off by a game of Aunt Sally, an Oxfordshire favourite, where the Elves triumphed.

I would be most grateful if you would acknowledge receipt of this letter and let us know how the money has been spent.

Best Wishes and Good Luck with the superb work you do.

Yours sincerely

Charlie Beardmore, on behalf of:

Officers, Trustees and Members of Penguins Against Cancer