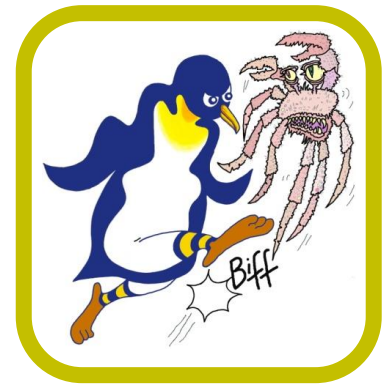


PENGUINS AGAINST CANCER

www.penguinsagainstcancer.org.uk

Dr Matthew Clarke
Clinical Research Fellow: Glioma Team
The Institute of Cancer Research
Brookes Lawley Building
Cotswold Road
Sutton
SM2 5NG



Kicking Cancer Into Touch!

18th August 2021

Dear Dr Clarke

Further to our letter of 18th June, please find enclosed cheque number 126 from Penguins Against Cancer to the Institute of Cancer Research for **£5,000**. This is a Fergus Scholefield Cancer Research Grant to support your study looking to methylation profiling of diffuse glioma in the teenage and young adult population.

Penguins Against Cancer would be grateful if you could acknowledge receipt of this cheque in writing.

As before with previous grants to the ICR, under the terms of the award any publication, presentation or poster produced by the recipient must acknowledge any significant contribution from the Fund and include the Charity's logo (details available from us via email to: penguinsagainstcancer@outlook.com). The recipient must also inform the Charity about all publications the fund has contributed to.

We wish you every success in your ongoing research.

Yours sincerely

A handwritten signature in blue ink, appearing to read 'Pat Gush'.

Pat Gush
Vice-President

Charlie Beardmore
President

Simon Hughes
Committee Member
Fergus Scholefield Memorial
Cancer Research Fund

On behalf of the Officers, Trustees and Members of Penguins Against Cancer