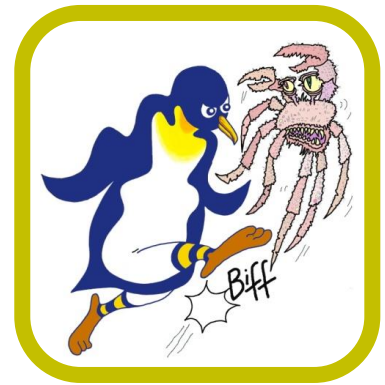


PENGUINS AGAINST CANCER



Kicking Cancer Into Touch!

St Wilfrid's Hospice,
1 Broadwater Way,
Eastbourne,
East Sussex
BN22 9PZ

Registered Charity 283686

11th December 2016

Dear St Wilfrid's,

I enclose a grant of £4,000 from Penguins Against Cancer to you, to be used to provide palliative care in your excellent institution. This is in addition to the grant of £8,000 sent to you on 16th November 2016.

Penguins Against Cancer (PAC) is a registered charity which raises awareness of cancer, and makes grants to support cancer research, treatment and hospices. We continue to stage numerous sporting and social events with the aim of making altruism fun. The enclosed grant, proposed by Andrew Skyrme and Pat Gush, was made possible by the extraordinary generosity of those who attended the 2016 PAC Golf Tournament, superbly organised by Andrew and Pat. This grant, as previously, is in memory of Sarah Scott (Andrew is a good friend of Alister Scott) whom you looked after before she passed away in July 2016.

Further detail about Penguins Against Cancer is available at our website: penguinsagainstcancer.org.uk - please visit it and let us know what you think. (The report of the Golf Day is still in gestation I understand. In the meantime, the following remains the most vivid record: *"There were a number of outstanding drives, chips, putts and Mulligans throughout, following the Shotgun start. As well as birdies, eagles and albatrosses, the more agricultural golfers developed their own lexicon. The day raised a lot of money."*)

Andrew Skyrme would very much like to personally stage a cheque presentation ceremony to publicise both St Wilfrid's and PAC. He will be in touch with you directly to discuss how best to do this.

We would be most grateful if you would acknowledge receipt of this letter and let us know how the money has been spent.

Best Wishes for the Festive season and Good Luck with the continuing superb work you do.

Yours sincerely,

Dr Charlie Beardmore

Penguins' President