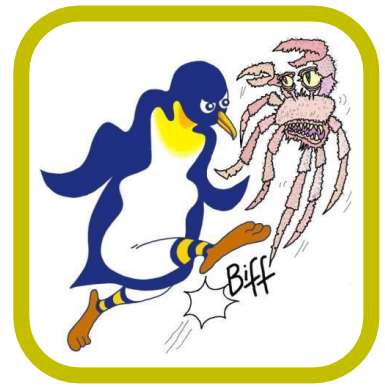


# PENGUINS AGAINST CANCER

---



*Kicking Cancer Into Touch!*

Dr Sally George  
c/o Professor Louis Chesler  
Paediatric Solid Tumour Biology Team  
Brookes Lawley Building  
Cotswold Road  
Sutton  
Surrey SM2 5NG

9<sup>th</sup> March 2020

Dear Dr George

## **Re: The 2019 Fergus Scholefield Cancer Research Grant**

Thank you for applying for the Fergus Scholefield Cancer Research Grant. Your application has been reviewed by our panel of clinicians, and I'm delighted to inform you that you have been successful. Please find enclosed a cheque for **£5,000** to help fund your PhD research project into "*The identification of PARPi resistance mechanisms in ATRX mutant neuroblastoma to guide novel combination strategies*".

The Fergus Scholefield Cancer Research Fund was established in 2016, in memory of a brave young man who, at the tender age of 2, battled through the treatment of his brain tumour with the support of family and friends. Sadly, it was not possible to cure him of the disease and Fergus died before his 3<sup>rd</sup> birthday. We know that his journey and strength have inspired many more to improve the lives of others and continue the search for better understanding and treatments for cancer. It is intended that this bursary will support researchers to keep pushing the boundaries, and that Fergus's short life will continue to motivate people for many years to come.

Penguins Against Cancer would be grateful if you could acknowledge receipt of this grant in writing. Under the terms of the award, any publication, presentation or poster produced by the recipient must acknowledge any significant contribution from the Fund, and include the Charity's logo (details available from our Marketing Officer, David Littlejohns, via the email address: [penguinsagainstcancer@outlook.com](mailto:penguinsagainstcancer@outlook.com)). The recipient must also inform the Charity about all publications the fund has contributed to. We wish you every success in your ongoing research.

Yours sincerely

**Charlie Beardmore**  
President

**Pat Gush**  
Chairman

**Simon Hughes**  
Committee Member  
Fergus Scholefield Memorial  
Cancer Research Fund