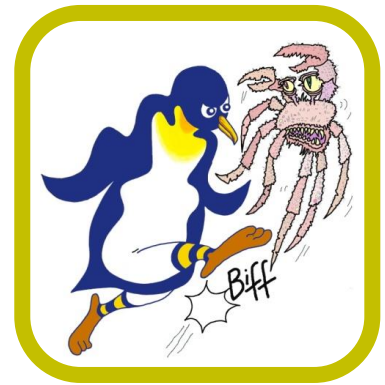


# PENGUINS AGAINST CANCER

---



*Kicking Cancer Into Touch!*

Ms Maria Wakefield  
The Fountain Centre  
St Luke's Cancer Centre  
Royal Surrey County Hospital NHS Trust Foundation  
Egerton Road  
Surrey  
GU2 7XX

12<sup>th</sup> December 2018

Dear Ms Wakefield

I enclose a grant of £2,000 from Penguins against Cancer to you, to be used to provide support to the Fountain Centre.

Penguins Against Cancer is a registered charity which raises awareness of cancer, and makes grants to support cancer research, treatment and hospices. We continue to stage numerous sporting and social events with the aim of making altruism fun.

The enclosed grant, proposed by Charlotte Beardmore, is made in direct support of a dear friend of ours and PAC supporter, Sarah Hill. This grant was made possible by the extraordinary generosity of our supporters.

Further detail about Penguins Against Cancer is available at our website: [penguinsagainstcancer.org.uk](http://penguinsagainstcancer.org.uk). Please visit the website; it is designed to project a positive outlook. I hope you enjoy it.

I would be most grateful if you would acknowledge receipt of this letter and let us know how the money has been spent.

With Very Best Wishes and continuing Good Luck with the superb work you do.

Yours sincerely

*(Signed electronically)*

**Charlie Beardmore**  
President

**Pat Gush**  
Chairman

*On behalf of the Officers, Trustees and Members of Penguins Against Cancer*