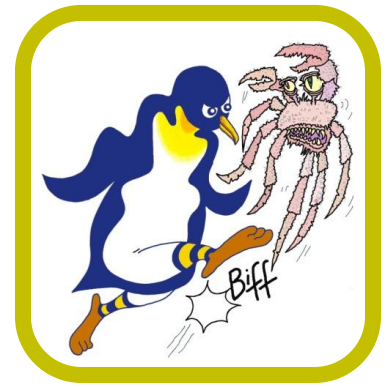


PENGUINS AGAINST CANCER



Kicking Cancer Into Touch!

Bowel Cancer UK
Wilcox House
140-148 Borough High Street
London SE1 1LB

28th February 2015

Dear Bowel Cancer UK,

Please find enclosed a cheque for £1,000 from Penguins Against Cancer, which is in addition to the £1,000 we sent to you in April 2014. Penguins Against Cancer is a registered charity which raises awareness of cancer and makes grants to support cancer research, treatment and hospices.

We stage numerous sporting and social events, and the enclosed grant, proposed by Graham and Sarah Hill, was made possible by the extraordinary generosity of, amongst others, Charlie Pugh, Chris and Anne Howell, Simon Hughes and Yae-eun. A mixed rugby and golf weekend took place in Jersey prior to Christmas which resulted in the Penguins XV losing narrowly to a significantly younger, and, some may say, somewhat fitter, Jersey Veterans' XV.

Earlier, Graham Hill had won the highly-coveted Heartbreak Hill Golf Trophy, in the Jersey closed classic, by a clear margin. Each of these events was followed by Charlotte Lane's outstandingly successful magic raffles. Further details of these exploits is available at our website www.penguinsagainstcancer.org.uk should you care to visit it.

We wish you every success in your ongoing efforts to battle to ravages of bowel cancer, and hope your excellent organisation has a very prosperous 2015. We would be most grateful if you would confirm receipt of this letter, and how you intend to spend this grant.

With Best Wishes from all the Penguin community.

Yours sincerely,

Charlie Beardmore, on behalf of:

Officers, Trustees and Members of Penguins Against Cancer