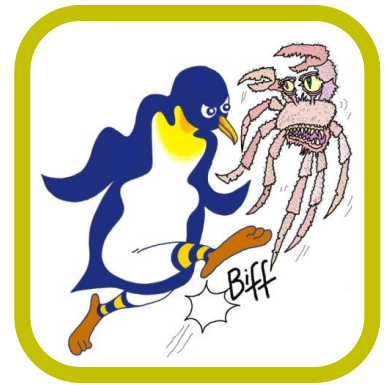


# PENGUINS AGAINST CANCER

---

Pelvic Radiation Disease Association  
PO Box 602,  
Epsom,  
KT17 9JB



*Kicking Cancer Into Touch!*

15<sup>th</sup> February 2018

Dear Pelvic Radiation Disease Association,

Please find enclosed a cheque for £5,000 for your organisation from Penguins Against Cancer (PAC), a charity set up in 2013 to raise awareness of cancer and to provide support to cancer research and treatment organisations, and hospices. This grant, proposed by Charlotte Beardmore and Pat Gush, and supported by John Staffurth and Jervoise Andreyev, was made possible following subscriptions and donations from our members, particularly Terry and Jane Gibson, who provided PAC with a very generous early Christmas present, Chris and Ann Howell, and Steve and Tina Challacombe, who have regularly emptied their very well-appointed wine cellar to provide premier prizes for PAC raffles.

PAC fundraising activities are many and diverse and all our events are designed to be both altruistic and fun, celebrating memories and achievements, rather than mourning loss (many of our members have lost family and/or close friends to cancer). If you wish to know more about our charity, please visit our website: [www.penguinsagainstcancer.org.uk](http://www.penguinsagainstcancer.org.uk) and let us know what you think.

We wish you and your staff every success in your continuing battle against pelvic radiation disease and hope that your efforts continue to help alleviate the worst of this dreadful condition. We would be grateful if you would confirm receipt of this letter and indicate how you intend to spend the grant.

With Very Best Wishes from the whole of the Penguin Flock.

*(Signed electronically)*

**Charlie Beardmore**  
President

**Pat Gush**  
Chairman

*On behalf of the Officers, Trustees and Members of Penguins Against Cancer*