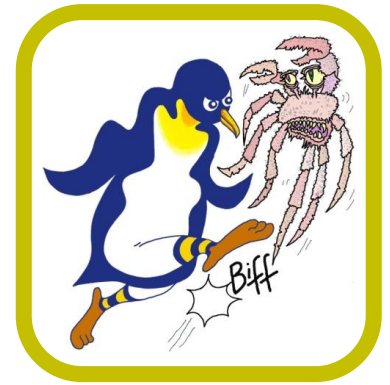


PENGUINS AGAINST CANCER

www.penguinsagainstcancer.org.uk

Sarah Savaridas
Senior Clinical Lecturer
University of Dundee
Ninewells Medical School and Hospital
Dundee
DD1 9SY



Kicking Cancer Into Touch!

6th August 2023

Dear Sarah,

We are delighted to inform you that your application for a **£5,000 grant** to support your research project (Abbreviated MRI vs full protocol breast MRI for monitoring response to neoadjuvant chemotherapy. A pilot study) to the **Penguins Against Cancer (PAC) Ruth Prosser Womens Cancer Research Fund** has been successful. Please confirm who the cheque should be made out to.

As you are aware, the **Ruth Prosser Womens Cancer Research Fund** was created to support research into all cancers found in women with a particular focus on Breast, Ovarian and Cervical cancers. You are the recipient of the inaugural (2023) award.

Conditions of funding:

- That you acknowledge PAC funding, and the Ruth Prosser Womens Cancer Research Fund, in any presentations, articles or publications in relation to this project and note it on your Curriculum Vitae.
- That you produce a progress report in layman's terms about your project for PAC (approx. two sides of A4) by June 2024.
- You must inform PAC as soon as possible if the funds are not being used as set out in the application. PAC reserves the right to end the funding agreement should PAC deem the use of funds to be unreasonable or to vary too greatly from the use set out in the application.
- Any unused or unspent funds are to be returned to PAC.
- You must inform PAC as soon as possible if there is any delay in the proposed start date of the project.

PAC is a registered charity which raises awareness of cancer, and makes grants to support cancer research, treatment and hospices. PAC is staffed entirely by volunteers and has no running costs. Further detail is available on the PAC website at penguinsagainstcancer.org.uk.



We wish you every success in your research and look forward to receiving progress reports.

With very Best Wishes from the whole Penguin community

Yours sincerely

A handwritten signature in blue ink, appearing to read 'Charlie Beardmore'.

Charlie Beardmore
President

Pat Gush
Vice-President

Simon Hughes
Committee Member
Fergus Scholefield Memorial
Cancer Research Fund

On behalf of the Officers, Trustees and Members of Penguins Against Cancer