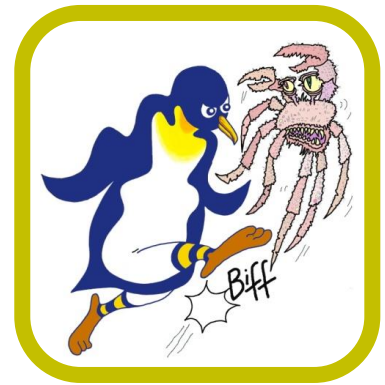


# PENGUINS AGAINST CANCER

---



*Kicking Cancer Into Touch!*

Guy's and St Thomas' Charity  
2nd Floor Virginia Woolf Building 22  
Kingsway  
London  
WC2B 6LE

28<sup>th</sup> January 2019

Dear Guy's and St Thomas' Charity,

We are writing to you enclosing a cheque for £2,000 as a grant from Penguins Against Cancer (PAC) to the Guy's Cancer Centre, specifically to be used to support the Dimpleby Patient Support Services. This grant is in addition to the £1,000 grant provided by PAC to support the Guy's Cancer Centre in November 2016. This grant was proposed by Pat Gush and Alan Mistlin, both of whom are PAC Trustees and have played rugby for Guy's for a number of decades. The grant has been made possible by some excellent fundraising efforts by our supporters, not least the students' 'Raising and Giving' initiative [kcl-rag], and GKT Women's Rugby Club.

PAC exists to raise cancer awareness, and to provide support to cancer research and treatment, as well as to hospices. It has no running or administrative costs and has a large number of students studying at Guy's Hospital as Members.

We would be most grateful if you would write back to us confirming receipt of the grant and how it will be spent, in support of Dimpleby Services.

We wish Guy's Cancer Centre continuing success in the excellent work it is doing. Please feel free to visit our website [www.penguinsagainstcancer.org.uk](http://www.penguinsagainstcancer.org.uk) and let us know what you think.

DARE QUAM ACCIPERE

With Very Best Wishes

*(Signed electronically)*

**Charlie Beardmore**  
President

**Pat Gush**  
Chairman

*On behalf of the Officers, Trustees and Members of Penguins Against Cancer*