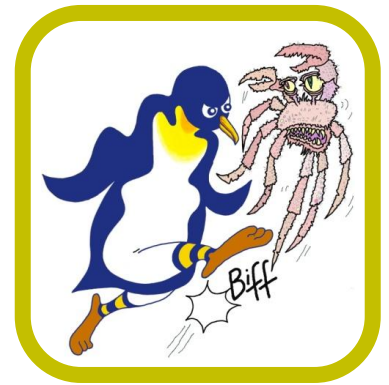


PENGUINS AGAINST CANCER



Kicking Cancer Into Touch!

St. Christopher's Hospice

51-59 Lawrie Park Road

London

SE26 6DZ

11th September 2014

Dear St. Christopher's,

I enclose a cheque for £2000 donated by Penguins Against Cancer to you, to be used to provide palliative care in your excellent institution. Penguins Against Cancer is a small charity founded to provide support to cancer research and cancer treatment organisations and hospices. We were made aware of the marvellous work you do, to support those near the end of their lives, by Sandra Rumbold.

Paul Harwood and Pat Gush organised a fantastic charity golf day at Lingfield Park (won incidentally by Paul) which, coupled with Pat's magic raffle, has made the enclosed donation possible. I would be most grateful if you would acknowledge receipt of this letter and let us know how the money has been spent.

Best Wishes and Good Luck with the superb work you do.

Yours sincerely

Charlie Beardmore, on behalf of:

Officers, Trustees and Members of Penguins Against Cancer