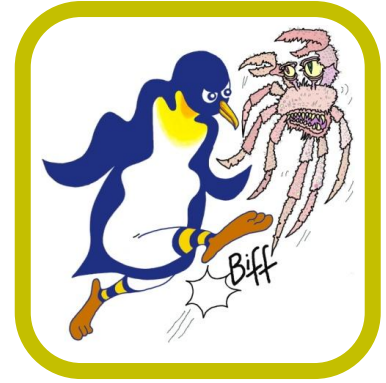


# PENGUINS AGAINST CANCER

---

[www.penguinsagainstcancer.org.uk](http://www.penguinsagainstcancer.org.uk)

Rosemere Cancer Centre  
Royal Preston Hospital  
Sharoe Green Lane  
Preston  
PR2 9HT  
[rosemere@lthtr.nhs.uk](mailto:rosemere@lthtr.nhs.uk)



*Kicking Cancer Into Touch!*

12<sup>th</sup> February 2026

Dear Rosemere Cancer Centre,

We are electronically transferring a Grant of £5,000 from Penguins Against Cancer (PAC) to you, to be used specifically to fund the treatment of prostate cancer in your institution. The Grant, proposed by Alan Mistlin and Charlie Beardmore, is in direct support of Martin Clare, Alan's close friend and sister in law's partner, who has been receiving outstanding care from Dr Portner's team. The care he has received has been characterised as 'Brilliant'. We would ask you to acknowledge Martin as the inspiration behind this Grant.

This Grant was made possible following hugely successful fundraising by the 43 strong Penguin Peloton, ranging in age from 18 to 68, on their cycle ride from Guy's Hospital to Guy's Hospital via Brittany and Normandy over 4 days last year, covering over 340 miles. Alan and Charlie both completed this very enjoyable challenge.

PAC exists to raise cancer awareness, and to provide support to cancer research and treatment, and hospices. It has no running or administrative expenses (all costs being met by PAC Members) and has many students studying at Guy's Hospital as active supporters. Please feel free to visit our website [www.penguinsagainstcancer.org.uk](http://www.penguinsagainstcancer.org.uk) and let us know what you think.

We wish you continuing success in the excellent work you are doing. We would be most grateful if you would write back to us acknowledging receipt of the grant and confirming how it will be spent. Please feel free to send your response as an attachment, via email to [penguinsagainstcancer@outlook.com](mailto:penguinsagainstcancer@outlook.com), as we would like to publish it on our website.

Yours sincerely,

Two handwritten signatures in blue ink. The signature on the left is 'Charlie Beardmore' and the signature on the right is 'Patrick Gush'.

**Charlie Beardmore**  
**President**

**Patrick Gush**  
**Vice President**

On behalf of the Trustees, Officers and Members of Penguins Against Cancer.