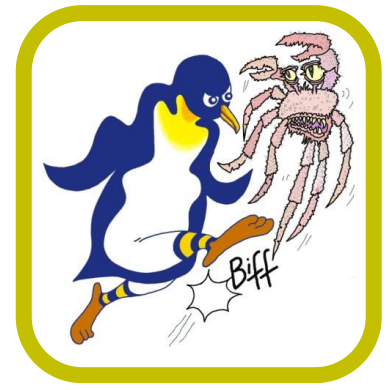


# PENGUINS AGAINST CANCER

---

[www.penguinsagainstcancer.org.uk](http://www.penguinsagainstcancer.org.uk)

Greenwich and Bexley Community Hospice  
185 Bostall Hill  
Abbey Wood  
London  
SE2 0GB



*Kicking Cancer Into Touch!*

20<sup>th</sup> March 2024

Dear Greenwich and Bexley Community Hospice,

We are writing to you enclosing a cheque for **£5,000** as a grant from Penguins Against Cancer (PAC) to you, specifically to be used to provide terminal care for cancer patients in your excellent institution.

This grant was proposed by Charlie and Pat Gush, both longstanding PAC Trustees, following a request from Eileen Pallen, a Past Mayor of Bexley. You cared for one of Eileen's close friends who was terminally ill with cancer. Your team's highly professional and compassionate care had a profound impact on all who knew her. Since Eileen's introduction to the Hospice, she has herself become a firm supporter and volunteers as a Compassionate Neighbour. We would therefore like you to acknowledge Eileen as the inspiration behind this grant.

PAC exists to raise cancer awareness, and to provide support to cancer research and treatment, as well as to hospices. It has no running or administrative expenses (all costs being met by individual PAC Members) and has many students studying at Guy's Hospital as active supporters. Please feel free to visit our website [www.penguinsagainstcancer.org.uk](http://www.penguinsagainstcancer.org.uk) and let us know what you think.

We would be most grateful if you would write back to us confirming receipt of the grant and how it will be spent. Please feel free to send as an attachment, via email to [penguinsagainstcancer@outlook.com](mailto:penguinsagainstcancer@outlook.com), as we wish to publish this on our website.

We wish you continuing success in the excellent work you are doing.

Yours sincerely,

**Charlie Beardmore**  
**President**

**Patrick Gush**  
**Vice President**

On behalf of the Trustees, Officers and Members of Penguins Against Cancer.